



SILSOE HOUSE, PARK VILLAGE EAST, LONDON, NW1

ASKING PRICE £249,950
LEASEHOLD
SOLE AGENTS

For further information,
please call our
Regents Park Sales
office on +44 20 7723 9988

An outstanding studio apartment in this award winning Crown Estate block, benefiting from plenty of natural light and terrace.

Property comprises large studio room, separate kitchen and bathroom.

Silsoe House is located on Park Village East just beyond the grounds of Regents Park, offering easy access to Mornington Crescent Tube Station, Great Portland Street tube station and the open spaces of Regents Park and Primrose Hill.

Regent's Park Office

213-215 Gloucester Place, Regent's Park, London NW1 6BU
T: +44 (0)20 7723 9988 F: +44 (0)20 7723 9958 E: sales@sandfords.com

Marylebone Village Office

6 Paddington Street, Marylebone Village, London W1U 5QG
T: +44 (0)20 7224 4994 F: +44 (0)20 7224 4989 E: sales@sandfords.com





Accommodation

Spacious studio apartment

Benefits

- § Entryphone system
- § Bright and airy
- § Within walking distance to both Baker Street and Marylebone stations

Tenure

Leasehold, with approximately 74 years remaining

Ground Rent

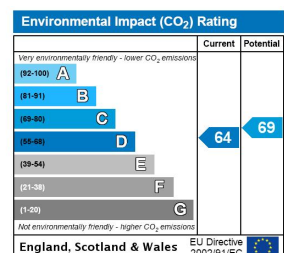
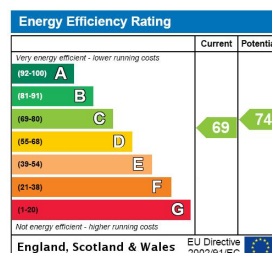
Approximately, £40 per annum

Service Charge

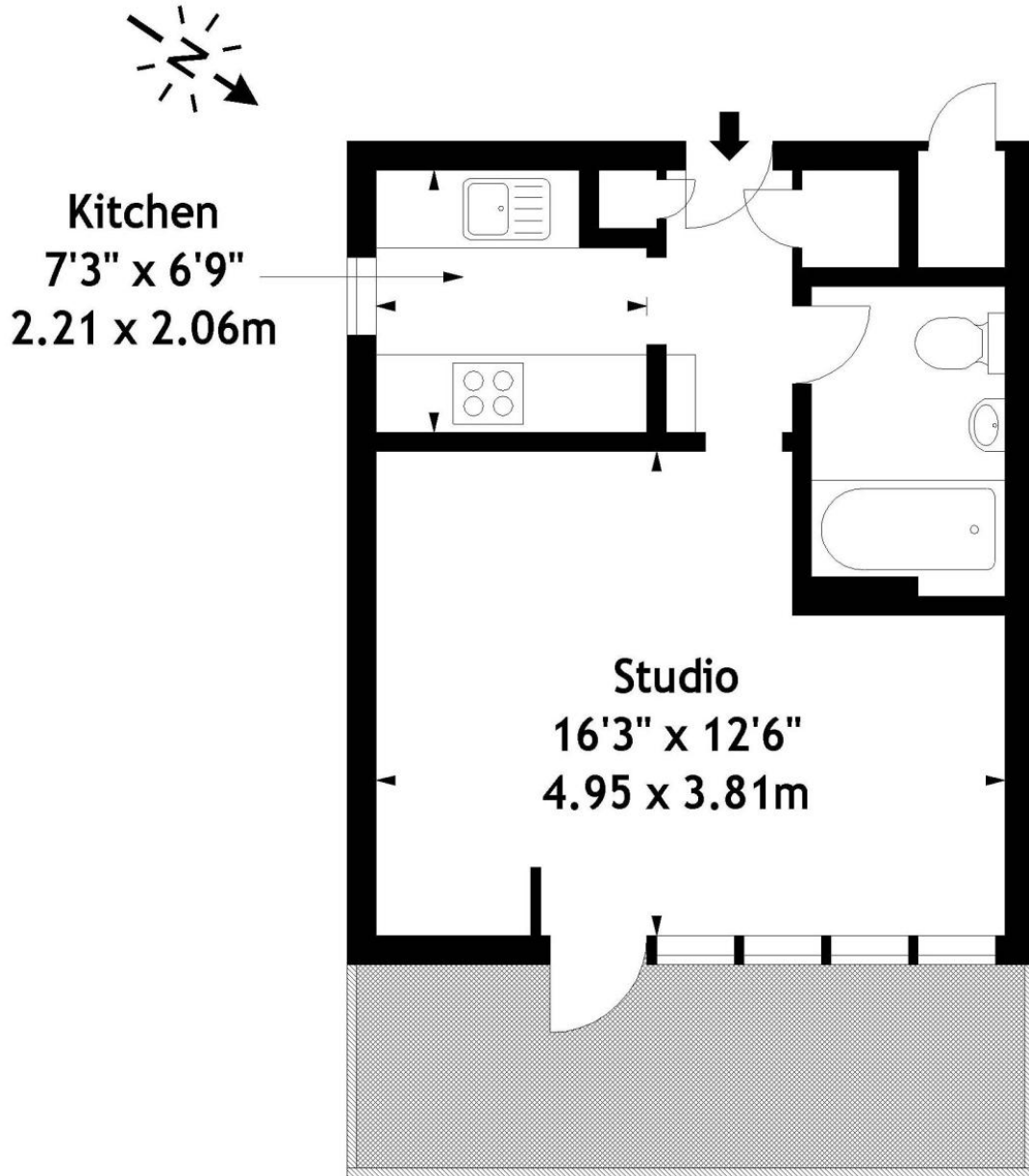
Approximately, £520 per annum

Price

£249,950 subject to contract



Silsoe House, NW1
Approx. Gross Internal Area
321 Sq Ft - 29.82 Sq M



Ground Floor

Please note that we have not checked the working condition of the appliances or services. All measurements are made using a sonic tape measure and are subject to a small margin of error. Sandfords as agents for the vendor or lessor and for themselves give notice that: (1) these particulars are provided merely as a general guide to the property and are not and shall not hereafter become part of any offer or contract. (2) The statements herein are made in good faith but without any responsibility whatsoever on the part of the vendor, Sandfords or their servants Purchasers or Lessees should not rely on these particulars as statements or representation of fact but should satisfy themselves by inspection or otherwise as to their accuracy and fullness. (3) Neither the Vendor nor any person in the employ of Sandfords has any authority to make or give any representation or warranty whatsoever in respect of the property. Sandfords & Cooper Estates Limited. Registered in England No. 2961709.