



PORTLAND PLACE, MARYLEBONE, LONDON, W1

ASKING PRICE £3,995,000
LEASEHOLD

Situated in the heart of central London close to fashionable Marylebone High Street in an imposing and exclusive portered block, this immaculately decorated apartment has been designed and executed with an exceptional eye for detail.

The property comprises of approximately 3,303 sq ft and features 1,600 sq ft of fabulous open plan entertaining/living space on the ground floor and three generous bedrooms suites on the lower ground floor.

Portland Place is a grand and elegant address which leads north from Regent's Street towards Park Crescent and Regent's Park. The area offers easy access to the numerous transport, shopping and entertainment facilities of Marylebone Village, the West End and Mayfair.

Regent's Park Office

213-215 Gloucester Place, Regent's Park, London NW1 6BU

T: +44 (0)20 7723 9988 F: +44 (0)20 7723 9958 E: sales@sandfords.com

Marylebone Village Office

6 Paddington Street, Marylebone Village, London W1U 5QG

T: +44 (0)20 7224 4994 F: +44 (0)20 7224 4989 E: sales@sandfords.com





Accommodation

Entrance hall, drawing room, kitchen/dining room, three bedrooms (two with dressing rooms and all en suite), cloakroom, laundry room and store room/office

Benefits

- § Air conditioning
- § Cat 5 cabling
- § Porter
- § Spacious and bright
- § Good decorative order
- § Within walking distance of the open space of Regent's Park

Tenure

Leasehold

Ground Rent

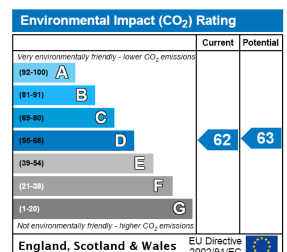
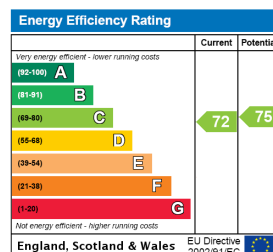
To be advised

Service Charge

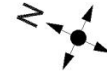
To be advised

Price

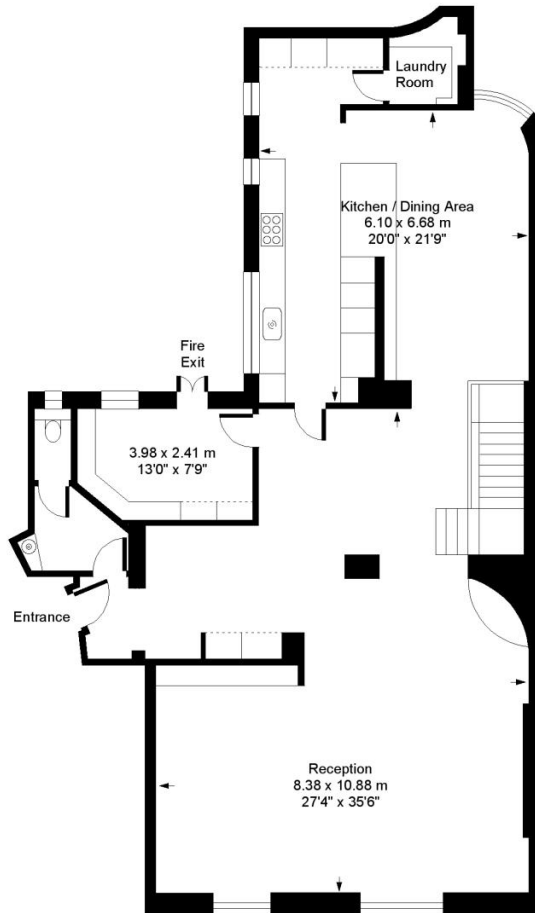
£3,995,000 subject to contract



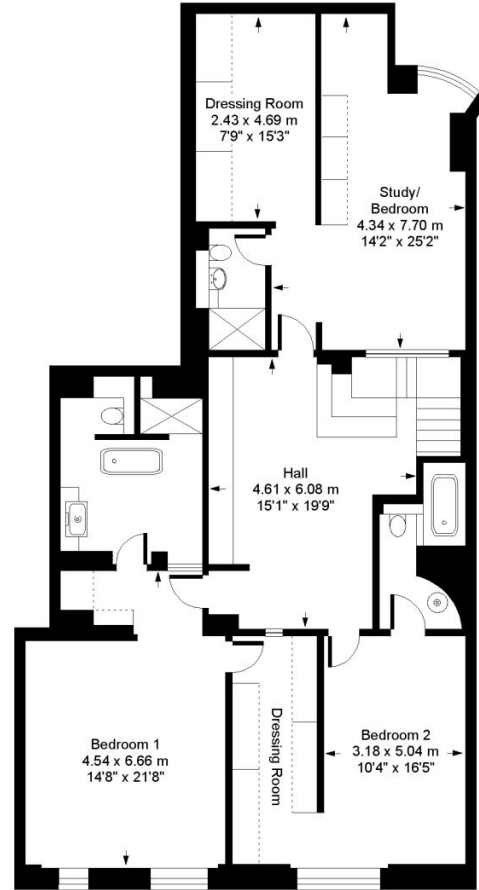
Portland Place W1



Approx. Gross Floor Area = 306 sq.meters • 3303 sq.feet



GROUND FLOOR



LOWER GROUND FLOOR

Please note that we have not checked the working condition of the appliances or services. All measurements are made using a sonic tape measure and are subject to a small margin of error. Sandfords as agents for the vendor or lessor and for themselves give notice that: (1) these particulars are provided merely as a general guide to the property and are not and shall not hereafter become part of any offer or contract. (2) The statements herein are made in good faith but without any responsibility whatsoever on the part of the vendor, Sandfords or their servants. Purchasers or Lessees should not rely on these particulars as statements or representation of fact but should satisfy themselves by inspection or otherwise as to their accuracy and fullness. (3) Neither the Vendor nor any person in the employ of Sandfords has any authority to make or give any representation or warranty whatsoever in respect of the property. Sandfords & Cooper Estates Limited. Registered in England No. 2961709.