



APARTMENT 10, OAK LODGE WEST HEATH ROAD, HAMPSTEAD, NW3

ASKING PRICE £2,450,000
LEASEHOLD

A stunning, newly created, three bedroom second floor apartment, forming part of Oak Lodge, an exclusive, luxury development of just eleven apartments in Hampstead. This beautiful apartment comprises living/dining area, kitchen, master bedroom, two further bedrooms, three bathrooms, separate WC and kitchen.

Oak Lodge has been created by a team of celebrated architects, interior designers and landscape gardeners. This distinctive and contemporary development boasts many unique and bespoke design features and is situated in an elevated position on West Heath Road with a daily porter service, 24 hour CCTV security, an indoor swimming pool and underground parking for two cars.

Close to Hampstead, one of London's most prestigious villages, the interior and exterior spaces are both iconic and inspirational. This is a place where luxurious modern living sits comfortably with the tranquillity of wide leafy avenue. Pavement cafes mingle with designer shops on Hampstead High Street, galleries and sophisticated restaurants abound in nearby St John's Wood. All this is on your doorstep with easy access to the centre of London too. Tube, rail, bus and road links not only connect you quickly to the West End but also allow for an easy exit from London to the surrounding countryside.

Regent's Park Office

213-215 Gloucester Place, Regent's Park, London NW1 6BU
T: +44 (0)20 7723 9988 F: +44 (0)20 7723 9958 E: sales@sandfords.com

Marylebone Village Office

6 Paddington Street, Marylebone Village, London W1U 5QG
T: +44 (0)20 7224 4994 F: +44 (0)20 7224 4989 E: sales@sandfords.com





Accommodation

Living/dining area, kitchen, master bedroom, two further bedrooms, three bathrooms and separate WC

Benefits

- § 24 hour security with cameras linked to concierge desk
- § Secure parking providing two spaces per apartment
- § Direct lift access from car park to communal lobby areas
- § Swimming pool with feature roof light
- § Jacuzzi style room
- § Private and communal garden landscape design

Tenure

Leasehold, with approximately 999 years remaining

Ground Rent

To be advised

Service Charge

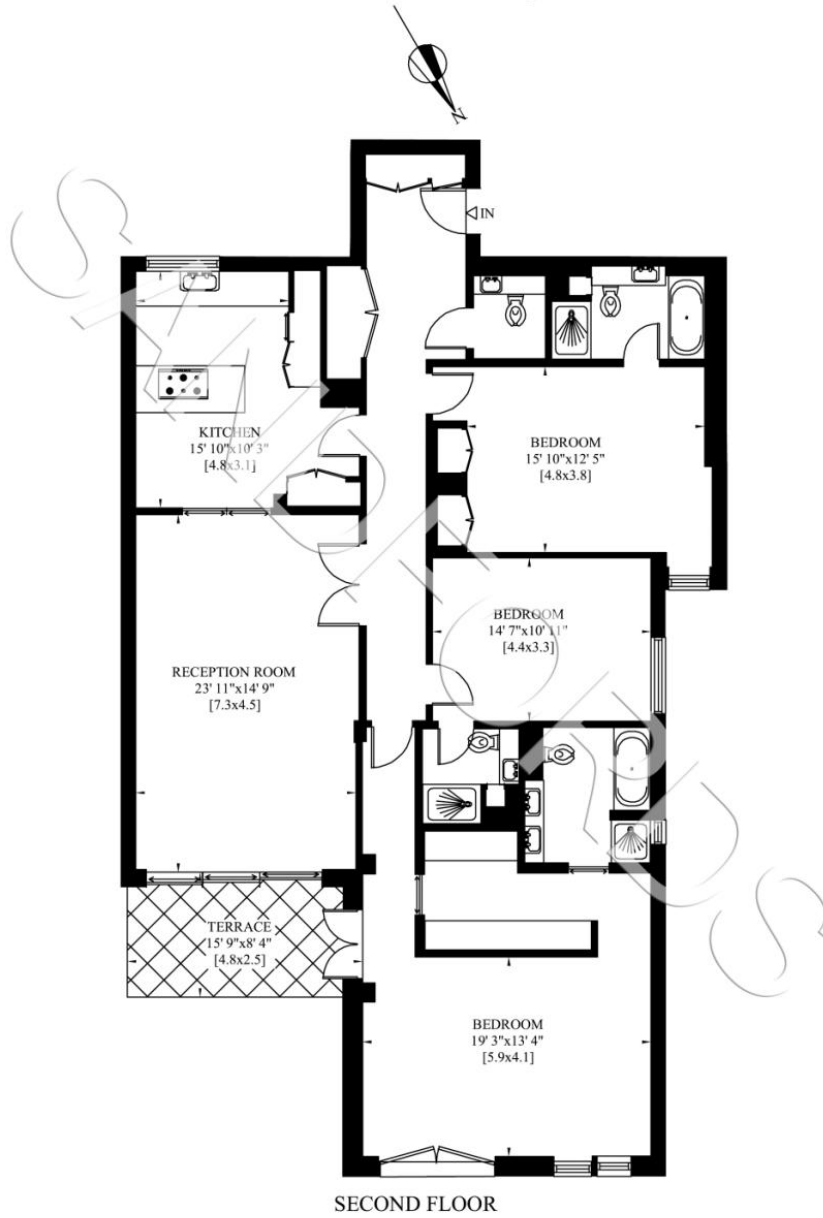
To be advised

Price

£2,450,000 subject to contract

FLAT 10
67 WEST HEATH ROAD
LONDON NW3

Gross Internal Area: 175 Sq. metres
1884 Sq. feet



SECOND FLOOR

Please note that we have not checked the working condition of the appliances or services. All measurements are made using a sonic tape measure and are subject to a small margin of error. Sandfords as agents for the vendor or lessor and for themselves give notice that: (1) these particulars are provided merely as a general guide to the property and are not and shall not hereafter become part of any offer or contract. (2) The statements herein are made in good faith but without any responsibility whatsoever on the part of the vendor, Sandfords or their servants. Purchasers or Lessees should not rely on these particulars as statements or representation of fact but should satisfy themselves by inspection or otherwise as to their accuracy and fullness. (3) Neither the Vendor nor any person in the employ of Sandfords has any authority to make or give any representation or warranty whatsoever in respect of the property. Sandfords & Cooper Estates Limited. Registered in England No. 2961709.