



## REGENT'S PARK TERRACE, REGENT'S PARK, LONDON, NW1

ASKING PRICE £3,250,000  
FREEHOLD  
SOLE AGENTS

An outstanding four bedroom period house set in a popular terrace being conveniently located close to the open spaces of both Regent's Park and Primrose Hill. Access to both Central London and Camden is also easy from this location.

The property is offered in good condition by the present owner with great attention to details comprising four bedrooms, three bathrooms, four reception rooms, two kitchens, study, two guest cloakrooms, utility room, two storage areas and mature garden.

#### Regent's Park Office

213-215 Gloucester Place, Regent's Park, London NW1 6BU  
T: +44 (0)20 7723 9988 F: +44 (0)20 7723 9958 E: sales@sandfords.com

#### Marylebone Village Office

6 Paddington Street, Marylebone Village, London W1U 5QG  
T: +44 (0)20 7224 4994 F: +44 (0)20 7224 4989 E: sales@sandfords.com





### Accommodation

Four bedrooms, two bathrooms, four reception rooms, two kitchens, study, two guest cloakrooms, utility room, two storage areas and mature garden

### Benefits

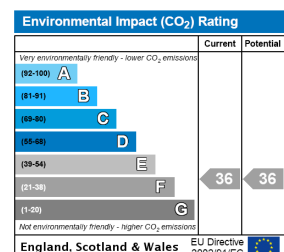
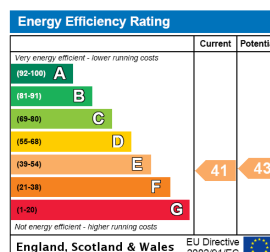
- § Wood flooring
- § High ceilings
- § Period features
- § Storage vaults
- § Within close proximity to the open spaces of Regent's Park and Primrose Hill

### Tenure

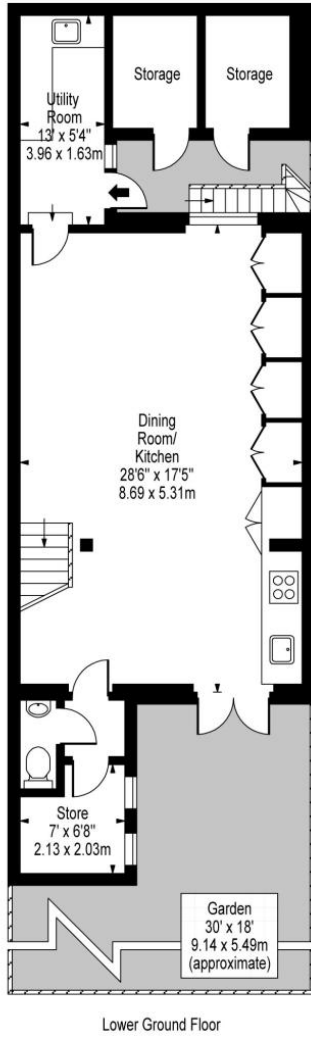
Freehold

### Price

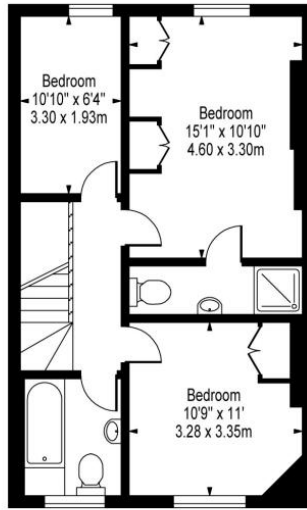
£3,250,000 subject to contract



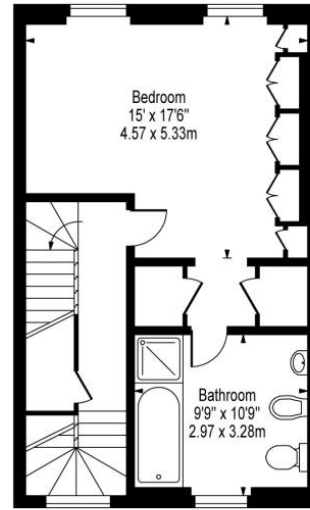
**Regent's Park Terrace,  
Primrose Hill, NW1 7EE**



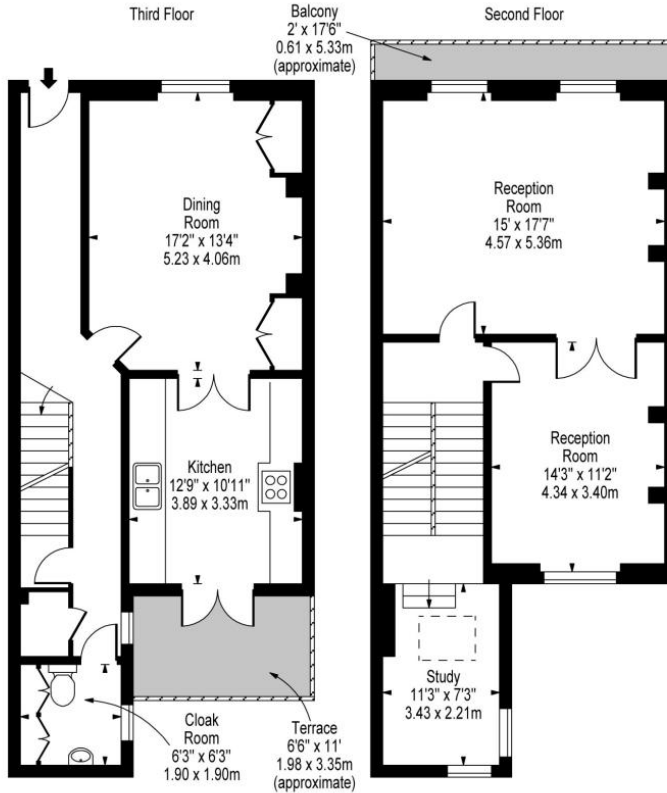
Lower Ground Floor



Third Floor



Second Floor



Ground Floor

First Floor

**Approx Gross Internal Area 2980 Sq Ft - 276.84 Sq M**

(Including Storage)

For Illustration Purposes Only - Not To Scale

Copyright Knight Frank

Ref. No. P48983

Please note that we have not checked the working condition of the appliances or services. All measurements are made using a sonic tape measure and are subject to a small margin of error. Sandfords as agents for the vendor or lessor and for themselves give notice that: (1) these particulars are provided merely as a general guide to the property and are not and shall not hereafter become part of any offer or contract. (2) The statements herein are made in good faith but without any responsibility whatsoever on the part of the vendor, Sandfords or their servants. Purchasers or Lessees should not rely on these particulars as statements or representation of fact but should satisfy themselves by inspection or otherwise as to their accuracy and fullness. (3) Neither the Vendor nor any person in the employ of Sandfords has any authority to make or give any representation or warranty whatsoever in respect of the property. Sandfords & Cooper Estates Limited. Registered in England No. 2961709.