



GLOUCESTER TERRACE, PADDINGTON, LONDON, W2

ASKING PRICE £950,000
LEASEHOLD
SOLE AGENTS

For further information,
please call our
Marylebone Village Sales
office on +44 20 7224 4994

A spacious apartment on the raised ground floor of an impressive period house benefitting from high ceilings and numerous period features. The property comprises of a large reception room, a good sized kitchen, three bedrooms, two bathrooms and a large private terrace.

Gloucester Terrace is close to the excellent shopping facilities provided by Queensway and Bayswater and is only a short walk from the open spaces of Hyde Park and the underground/mainline stations of Lancaster Gate and Paddington.

Regent's Park Office

213-215 Gloucester Place, Regent's Park, London NW1 6BU

T: +44 (0)20 7723 9988 F: +44 (0)20 7723 9958 E: sales@sandfords.com

Marylebone Village Office

6 Paddington Street, Marylebone Village, London W1U 5QG

T: +44 (0)20 7224 4994 F: +44 (0)20 7224 4989 E: sales@sandfords.com





Accommodation

Entrance hall, reception/ dining room, three bedrooms, kitchen, two bathrooms, storage and terrace

Benefits

- § Entry phone system
- § Original feautres
- § High ceilings
- § Terrace
- § Convienent location

Tenure

Leasehold, with approximately 990 years remaining

Ground Rent

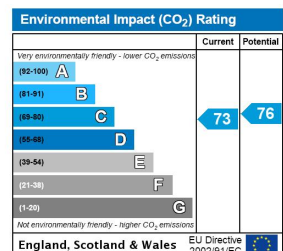
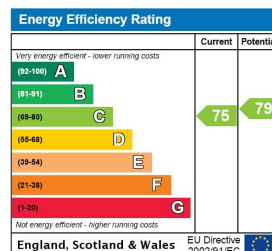
To be advised

Service Charge

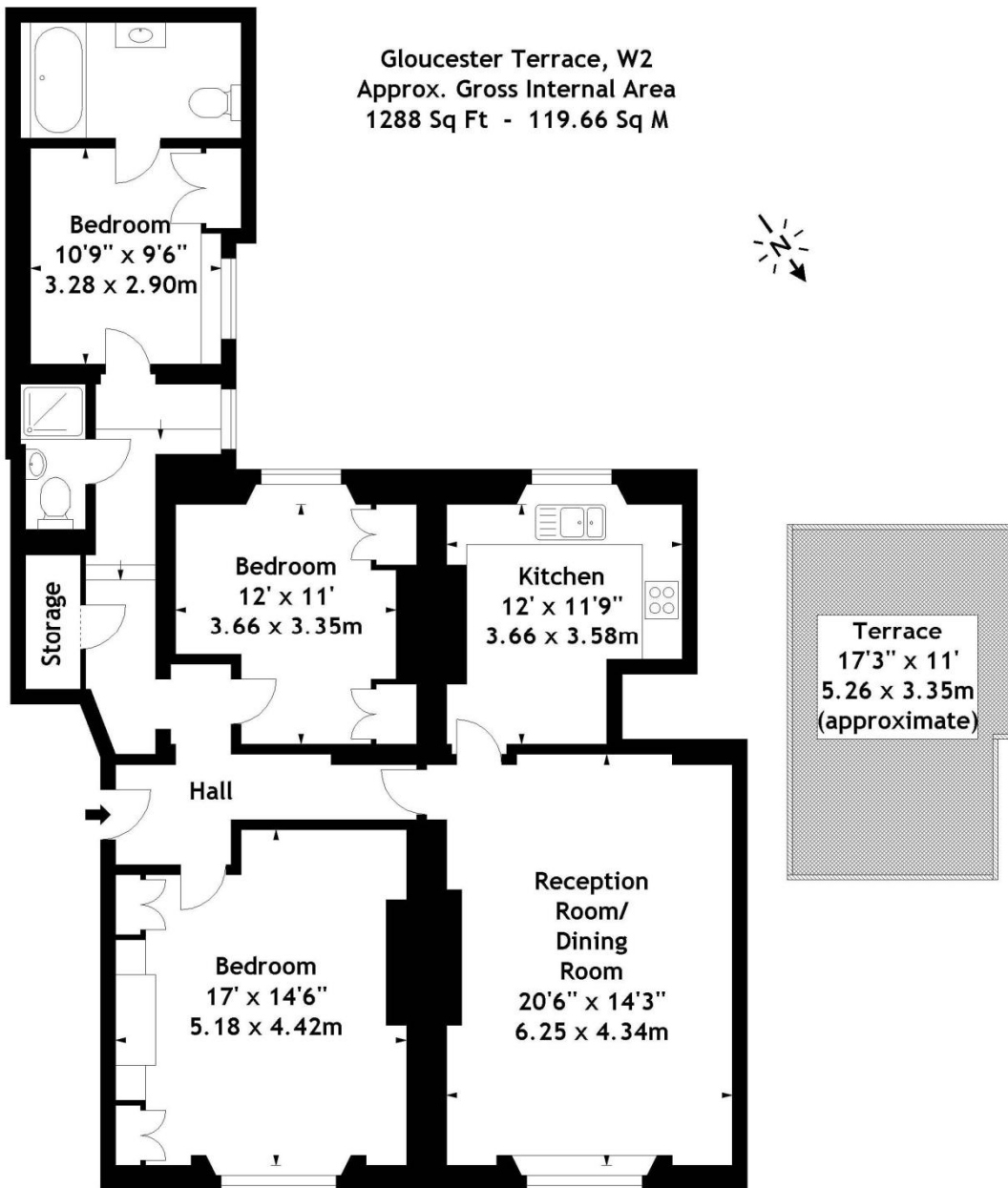
Approximately, £2,000 per annum

Price

£950,000 subject to contract



Gloucester Terrace, W2
Approx. Gross Internal Area
1288 Sq Ft - 119.66 Sq M



Raised Ground Floor

Please note that we have not checked the working condition of the appliances or services. All measurements are made using a sonic tape measure and are subject to a small margin of error. Sandfords as agents for the vendor or lessor and for themselves give notice that: (1) these particulars are provided merely as a general guide to the property and are not and shall not hereafter become part of any offer or contract. (2) The statements herein are made in good faith but without any responsibility whatsoever on the part of the vendor, Sandfords or their servants Purchasers or Lessees should not rely on these particulars as statements or representation of fact but should satisfy themselves by inspection or otherwise as to their accuracy and fullness. (3) Neither the Vendor nor any person in the employ of Sandfords has any authority to make or give any representation or warranty whatsoever in respect of the property. Sandfords & Cooper Estates Limited. Registered in England No. 2961709.